

Keilakampus Open 12



Oil Pattern Distance: **38 Feet**
 Forward Oil Total: **11.92 mL**
 Forward Boards Crossed: **298 Boards**

Reverse Brush Drop: **37 Feet**
 Reverse Oil Total: **7.92 mL**
 Reverse Boards Crossed: **198 Boards**

Oil Per Board: **40 uL**
 Volume Oil Total: **19.84 mL**
 Total Boards Crossed: **496 Boards**

Start	Stop	Loads	Speed	Crossed	Start	End	Feet	T.Oil
1	2L 2R	2	14	74	0.0	1.9	1.9	2960
2	3L 3R	1	18	35	1.9	4.4	2.5	1400
3	4L 4R	1	18	33	4.4	6.9	2.5	1320
4	5L 5R	1	18	31	6.9	9.4	2.5	1240
5	6L 6R	1	18	29	9.4	11.9	2.5	1160
6	7L 7R	1	18	27	11.9	14.4	2.5	1080
7	8L 8R	1	18	25	14.4	16.9	2.5	1000
8	9L 9R	1	18	23	16.9	19.4	2.5	920
9	10L 10R	1	18	21	19.4	21.9	2.5	840
10	2L 2R	0	22	0	21.9	38.0	16.1	0

Navigation: Forward Reverse More

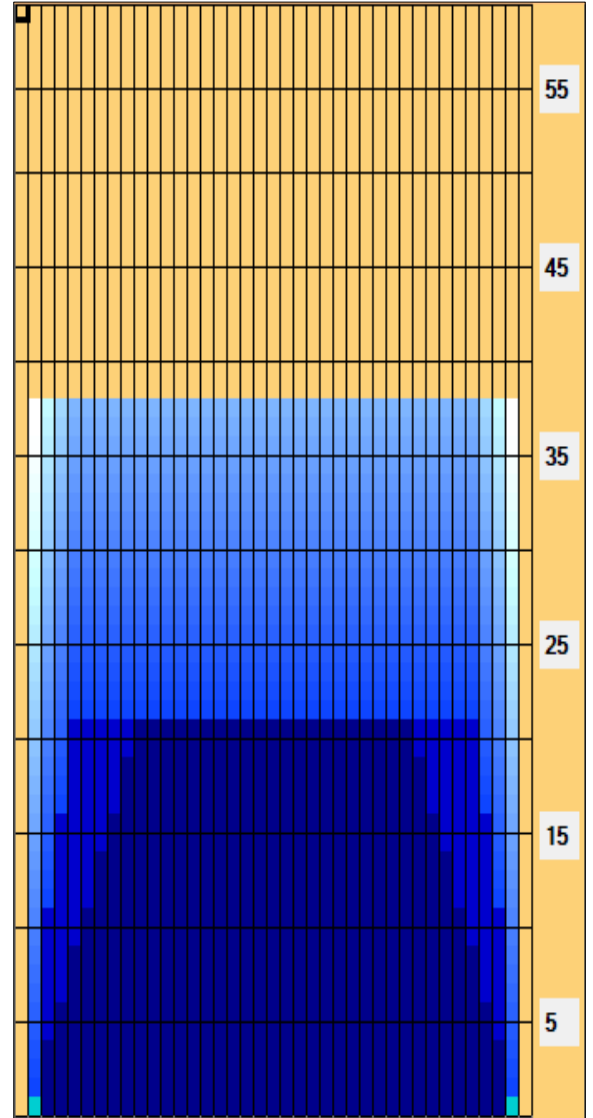
Start	Stop	Loads	Speed	Crossed	Start	End	Feet	T.Oil
1	2L 2R	0	30	0	38.0	21.0	-17.0	0
2	5L 5R	2	18	62	21.0	15.9	-5.1	2480
3	4L 4R	2	18	66	15.9	10.8	-5.1	2640
4	3L 3R	2	18	70	10.8	5.7	-5.1	2800
5	2L 2R	0	18	0	5.7	0.0	-5.7	0

Navigation: Forward Reverse More

Conditioner:
Type In or Select One

TransferType:
Type In or Select One

- Forward
- Reverse
- Combined
- Buff



Item	3L-7L:18L-18R	8L-12L:18L-18R	13L-17L:18L-18R	18L-18R:17R-13R	18L-18R:12R-8R	18L-18R:7R-3R
Description	Outside Track:Middle	Middle Track:Middle	Inside Track:Middle	Middle: Inside Track	Middle:Middle Track	Middle:Outside Track
Track Zone Ratio	1.63	1.04	1	1	1.04	1.63

